
WHY IS IT NOT TOTALLY FREE?

Please bear in mind:

- Children with us spend longer in nursery than the funding provides for (51 weeks instead of 38 weeks).
- Essentials and extras are not covered by government funding.

Extra charges apply for these reasons. We ask that parents acknowledge that there is a shortfall in government funding which varies across the age ranges. We require additional charges to help bridge this gap and refer to this as a 'Quality Premium'.

What isn't covered by the funding – our award winning healthy balanced meals, drinks & snacks. Toiletries, activities and craft materials, staff training and development and first aid over and above the minimum legal requirements. Staffing levels and qualifications over and above minimum requirements, and a dedicated and qualified Early Years Teacher on site. In addition to this our ParentZone app gives you daily updates and an interface with our staff.

BOOKING SESSIONS OR CHANGING SESSIONS.

Please remember to give us a month's notice if you wish to change your child's sessions.

HAVE QUESTIONS?

We pledge to work with you to find the most suitable and affordable childcare option for your needs.

Email Maria any funding related questions:
office@phoenixeducationdaynursery.co.uk

Email Laura/Jo if you wish to give notice to change your sessions:
info@phoenixeducationdaynursery.co.uk.

Or call 01634 717151.

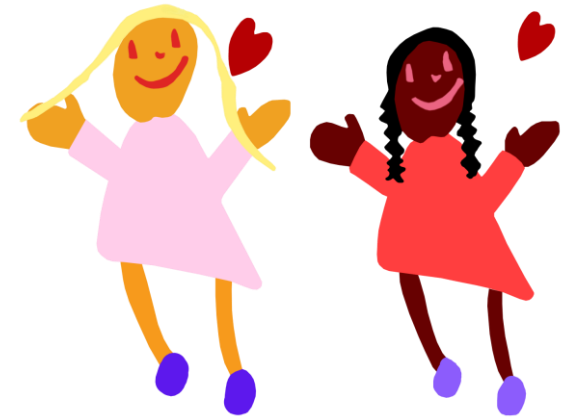
FORTHCOMING CHANGES TO FUNDING

Childcare support is increasing for working parents who will soon be able to claim 30hrs of funding for 38 weeks of the year from when their child is 9 months old to when they start school.

- From September 2024, all working parents of children aged 9 months and over can access 15 hours per week.
- From September 2025 all working parents of children aged 9 months and over can access 30 hours per week.

Phoenix Education Day Nursery

GOVERNMENT FUNDING



April 2024

WHAT FUNDING IS AVAILABLE?

From April 2024 the government will provide (38 weeks/year):

- 15hrs of funding to 2yr old children of working parents (or parent in single parent families) commencing the term after their 2nd birthday, eligibility requirements apply.
- 15hrs of funding to all 3yr old children regardless of working status 'universal funding'.
- An extra 15hrs of funding is provided to 3yr children whose parents are in work.

WHERE CAN I FIND OUT WHAT I AM ELIGIBLE FOR?

**Childcare
Choices**

Visit www.childcarechoices.gov.uk to find out exactly what you are entitled to and for all up to date information on help with childcare costs.

HOW DO I APPLY?

For 15hrs funded childcare for 3yr olds, all you have to do is get in touch with us – we will talk you through the process and ask to see your child's birth certificate as proof of eligibility.

15 hours funded childcare: for 2yr olds and 30hrs for 3yr olds you will need to apply through the above website. You will be required to reconfirm your eligibility every 3 months. It is your responsibility to renew your code to receive the funded hours or full fees will be payable.

HOW DOES THE FUNDING WORK?

Whether claiming 15 or 30hrs, remember that this is paid for 38 weeks of the year (term time only). To fit in with the majority of our parent's needs we offer all year round care, closing only for Christmas week. We 'stretch' the funding over the whole year. The Local Authority require a minimum amount of education is delivered per week:



15hr entitlement: a minimum of any 2 sessions per week equal to or greater than **11hrs**.

30hr entitlement: a minimum of 3 sessions per week equal to or greater than **22hrs**.

WHAT IS THE VALUE OF FUNDING?

2Yr Olds

15hrs per week for 38 weeks (term time only) = 570hrs/year (47.5hrs/month) childcare deducted from your invoice

We apply £6.19 per hour
= £294.02 per month

3Yr Olds

15hrs per week for 38 weeks (term time only) = 570hrs/year childcare.

We apply £5.10 per hour
= £242.25 per month

30hrs per week for 38 weeks (term time only) = 1140hrs/year childcare.

We apply £5.10 per hour
= £484.50 per month

Essentials and extras are not covered by government funding and our parents usually require their children to spend longer in nursery than the funding allows (51 weeks instead of 38 weeks) extra charges apply for this.

HOW MUCH WILL I PAY?

Attendance	Standard Monthly Fee
2 days/week	£552.50
3 days/week	£828.75
4 days/week	£1105.00
5 days/week	£1312.19

Attendance	Monthly fee after 11hrs stretched funding 2yrs
2 days/week	£258.48
3 days/week	£534.73
4 days/week	£810.98
5 days/week	£1032.86

Attendance	Monthly fee after 11hrs stretched funding 3yrs
2 days/week	£310.25
3 days/week	£586.50
4 days/week	£862.75
5 days/week	£1082.05

Attendance	Monthly fee after 22hrs stretched funding 3yrs
2 days/week	£229.50*
3 days/week	£344.25
4 days/week	£620.50
5 days/week	£851.91

*with 2 days per week attendance the Local Authority will only authorise a 15 hour stretched claim.